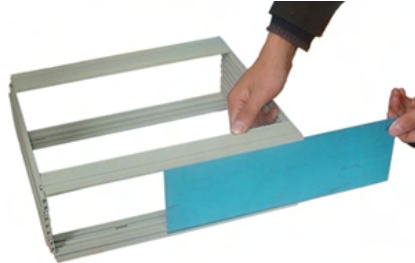


16-10 产品安装指南

步骤 ① 侧板安装



步骤 ② 铝面板安装



步骤 ③ 上下盖板安装



步骤 ④ 安装脚



步骤 ⑤ 安装脚盖板



步骤 ⑥ 螺钉



步骤 ⑦ 安装脚橡胶垫



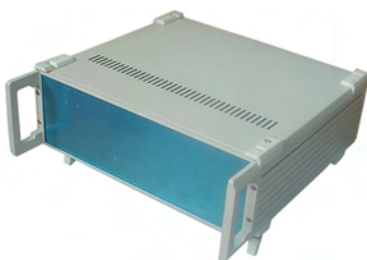
步骤 ⑧ 边框



步骤 ⑨ 安装把手



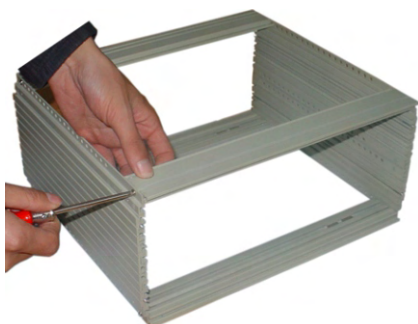
步骤 ⑩ 安装完成



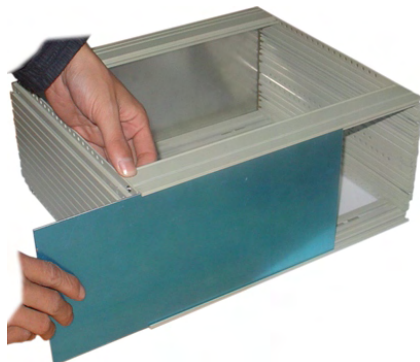
销售电话：0574-63226901 63226901 63226903
63226904 63226905.....63226910
传真：0574-63226900 63226908
E-mail:sanhe@sanheenclosure.com
nbsabhe@shmould.sina.net

16-13 产品安装指南

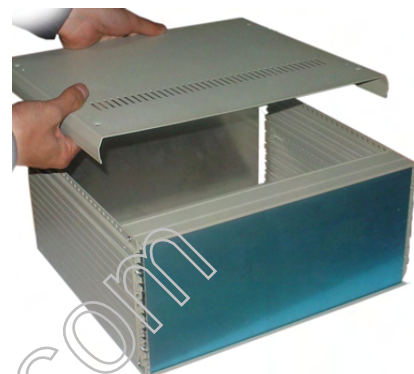
步骤① 侧板安装



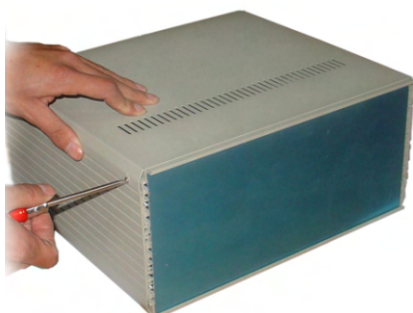
步骤② 铝面板安装



步骤③ 上下盖板安装



步骤④ 螺钉



步骤⑤ 安装脚螺钉



步骤⑥ 安装脚橡胶垫



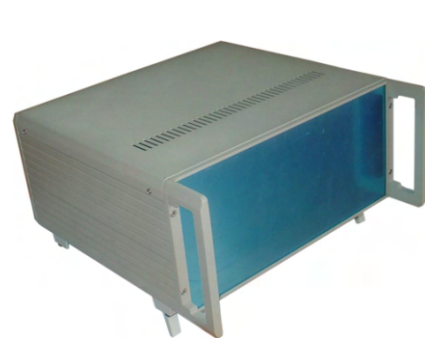
步骤⑦ 边框



步骤⑧ 安装把手



步骤⑨ 安装完成



销售电话：0574-63226901 63226901 63226903 63226904
63226905.....63226910

传真：0574-63226900 63226908

E-mail:sanhe@sanheenclosure.com nbsabhe@shmould.sina.net